

MAPK13 Antibody (monoclonal) (M01)

Mouse monoclonal antibody raised against a full length recombinant MAPK13.

Catalog # AT2785a

Specification

MAPK13 Antibody (monoclonal) (M01) - Product Information

Application	WB, IF
Primary Accession	O15264
Other Accession	BC000433
Reactivity	Human
Host	mouse
Clonality	Monoclonal
Isotype	IgG1 Kappa
Calculated MW	42090

MAPK13 Antibody (monoclonal) (M01) - Additional Information

Gene ID 5603

Other Names

Mitogen-activated protein kinase 13, MAP kinase 13, MAPK 13, Mitogen-activated protein kinase p38 delta, MAP kinase p38 delta, Stress-activated protein kinase 4, MAPK13, PRKM13, SAPK4

Target/Specificity

MAPK13 (AAH00433.1, 1 a.a. ~ 365 a.a) full-length recombinant protein with GST tag. MW of the GST tag alone is 26 KDa.

Dilution

WB~~1:500~1000

IF~~1:50~200

Format

Clear, colorless solution in phosphate buffered saline, pH 7.2 .

Storage

Store at -20°C or lower. Aliquot to avoid repeated freezing and thawing.

Precautions

MAPK13 Antibody (monoclonal) (M01) is for research use only and not for use in diagnostic or therapeutic procedures.

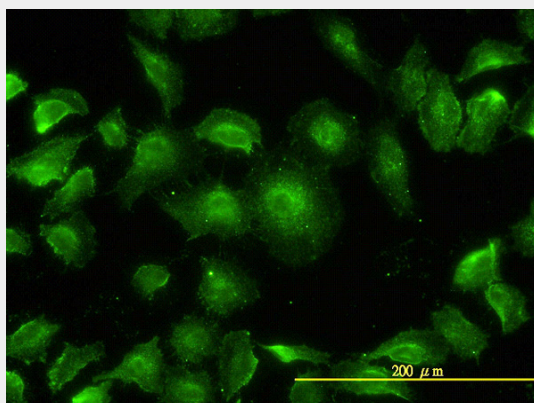
MAPK13 Antibody (monoclonal) (M01) - Protocols

Provided below are standard protocols that you may find useful for product applications.

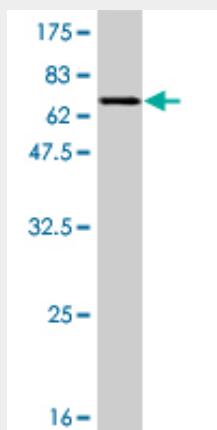
- [Western Blot](#)
- [Blocking Peptides](#)

- [Dot Blot](#)
- [Immunohistochemistry](#)
- [Immunofluorescence](#)
- [Immunoprecipitation](#)
- [Flow Cytometry](#)
- [Cell Culture](#)

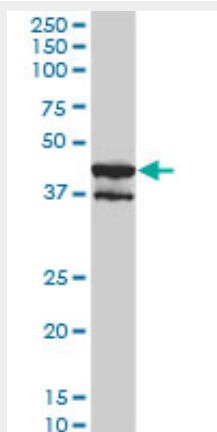
MAPK13 Antibody (monoclonal) (M01) - Images



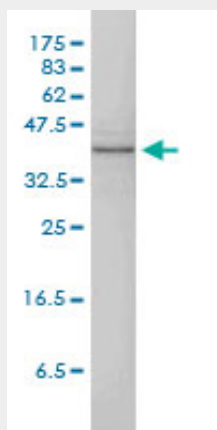
Immunofluorescence of monoclonal antibody to MAPK13 on HeLa cell. [antibody concentration 15 ug/ml]



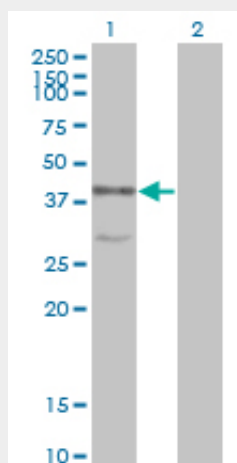
Antibody Reactive Against Recombinant Protein. Western Blot detection against Immunogen (65.78 KDa) .



MAPK13 monoclonal antibody (M01), clone 2C10-1C7. Western Blot analysis of MAPK13 expression in HepG2 (Cat # AT2785a)



MAPK13 monoclonal antibody (M01), clone 2C10-1C7 Western Blot analysis of MAPK13 expression in A-431 (Cat # AT2785a)



Western Blot analysis of MAPK13 expression in transfected 293T cell line by MAPK13 monoclonal antibody (M01), clone 2C10-1C7.

Lane 1: MAPK13 transfected lysate(42.1 KDa).

Lane 2: Non-transfected lysate.

MAPK13 Antibody (monoclonal) (M01) - Background

The protein encoded by this gene is a member of the MAP kinase family. MAP kinases act as an integration point for multiple biochemical signals, and are involved in a wide variety of cellular processes such as proliferation, differentiation, transcription regulation and development. This kinase is closely related to p38 MAP kinase, both of which can be activated by proinflammatory cytokines and cellular stress. MAP kinase kinases 3, and 6 can phosphorylate and activate this kinase. Transcription factor ATF2, and microtubule dynamics regulator stathmin have been shown to be the substrates of this kinase.

MAPK13 Antibody (monoclonal) (M01) - References

Variation at the NFATC2 Locus Increases the Risk of Thiazolinedione-Induced Edema in the Diabetes REduction Assessment with ramipril and rosiglitazone Medication (DREAM) Study. Bailey SD, et al. Diabetes Care, 2010 Jul 13. PMID 20628086. Human p38 delta MAP kinase mediates UV

irradiation induced up-regulation of the gene expression of chemokine BRAK/CXCL14. Ozawa S, et al. Biochem Biophys Res Commun, 2010 Jun 11. PMID 20478268. p38delta mitogen-activated protein kinase regulates skin homeostasis and tumorigenesis. Efimova T. Cell Cycle, 2010 Feb 1. PMID 20090411. Polymorphisms in innate immunity genes and patients response to dendritic cell-based HIV immuno-treatment. Segat L, et al. Vaccine, 2010 Mar 2. PMID 20056178. Gene-centric association signals for lipids and apolipoproteins identified via the HumanCVD BeadChip. Talmud PJ, et al. Am J Hum Genet, 2009 Nov. PMID 19913121.